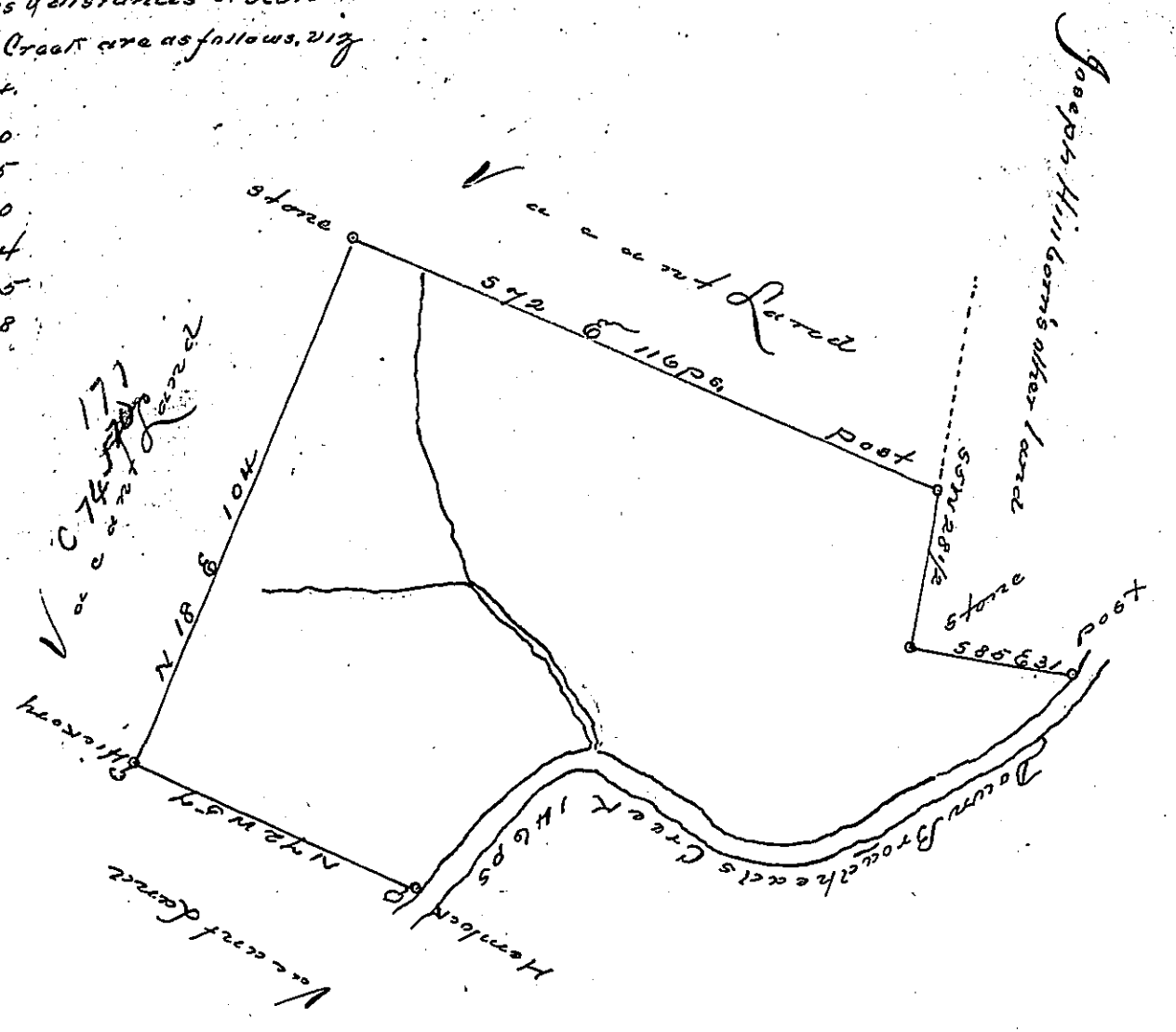


FORM No. 1.

The bearings & distances shown
Broadheads Creek are as follows, viz

- S. 42. W. 14.
- S. 54. W. 40.
- S. 80. W. 15.
- N. 61. W. 30.
- S. 85. W. 14.
- S. 35. W. 15.
- S. 39. W. 18.



By Virtue of a Warrant dated the 17th of April 1795, and surveyed the
 18th of June 1797, to Joseph Hillborn the above described tract of land
 Situate in Lower Smithfield Township Northampton County, Contain-
 ing sixty six acres and half and the allowance of six feet for a

p. Geo. Palmer d/s

To John Dickens Esq.
 Surveyor General

IN TESTIMONY that the above is a copy of the original remaining on file in
 the Department of Internal Affairs of Pennsylvania, made
 conformably to an Act of Assembly approved the 16th day of
 February, 1833, I have hereunto set my Hand and caused
 the Seal of said Department to be affixed at Harrisburg,
 this eighteenth day of April, 1905,

George R. Brown
 Secretary of Internal Affairs.